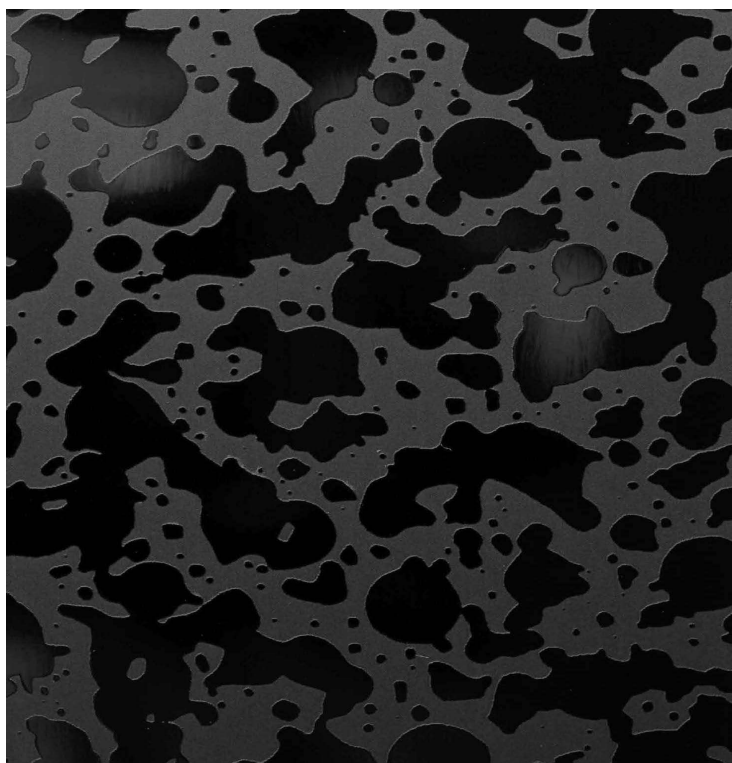




the inox in color

ARCHITECTURAL & DECORATIVE  
STAINLESS STEEL

# COLORED STAINLESS STEEL



# Colored Stainless Steel

THE INOX IN COLOR®

---

Here comes a revolution to the nobility and quality of stainless steel now with new textures, etched patterns, customized polishings and color, so much color, that allow you to create new projects, new ideas, new esthetic options.

Colors are obtained by Electrochemical and by PVD processes, completely stable and lasting. They are supplied in sheets of different measures and thicknesses, they can be cut, bended, perforated and manipulated as you wish. Etched patterns, mechanical polishings and color masking with many standard patterns and the possibility to create exclusive customized ones.

## Etched Patterns

The Inox in Color® offers the possibility to personalise your stainless steel surfaces with your own patterns. All those drawings that you can achieve in black and white, positive / negative, can be engraved on the decorative stainless steel surface and finished with any of our colors and finishings. Landscapes, regular geometrical motifs, Company logos, any decorative figures... the exclusive customisation of our surfaces allows you to obtain unique and unrepeatable finishings. We keep them exclusively safe only for your use. The Inox in Color® also offers available for all our customers a wide range of standard etched patterns on any of our colors and finishings.

## Antifingerprints Process

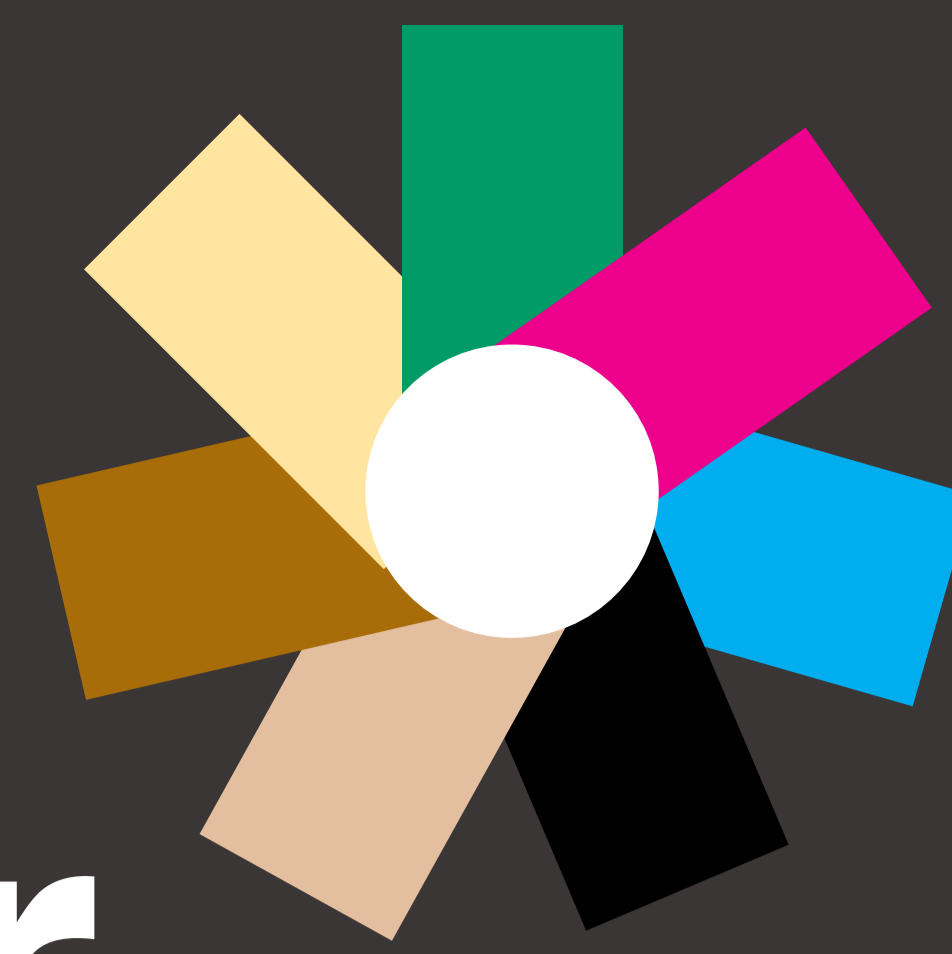
The Inox in Color® optionally offers the possibility of an Antifingerprints Process called NSP (Non Stain Process). An specialised nanotechnological Laboratory has developed this process exclusively for The Inox in Color®, a nanotechnological nanocoerture that provides our stainless steel decorative sheets with excellent antifingerprints properties, on noncolored but also on colored surfaces. The innovative NSP process has been developed by the mentioned nanotechnological Laboratory in closed cooperation with The Inox in Color®. It allows easily to keep stainless steel surfaces always clean: fingerprints, stains and other contaminations free. With no degradation of the original stainless steel unique and elegant look. This way you will avoid some of the biggest inconveniences of your projects with stainless steel. A big time and costs saving (easy-to clean), always clean stainless steel surfaces. Our NSP Process has also auto-cleaning properties in outdoor projects. It is water-, dust- and grease proof... you can clean our materials just by using a soft cloth. The resulting surface has also a bigger abrasion resistance than original stainless steel



Etched Patterns



NSP Antifingerprints



# the inox in color

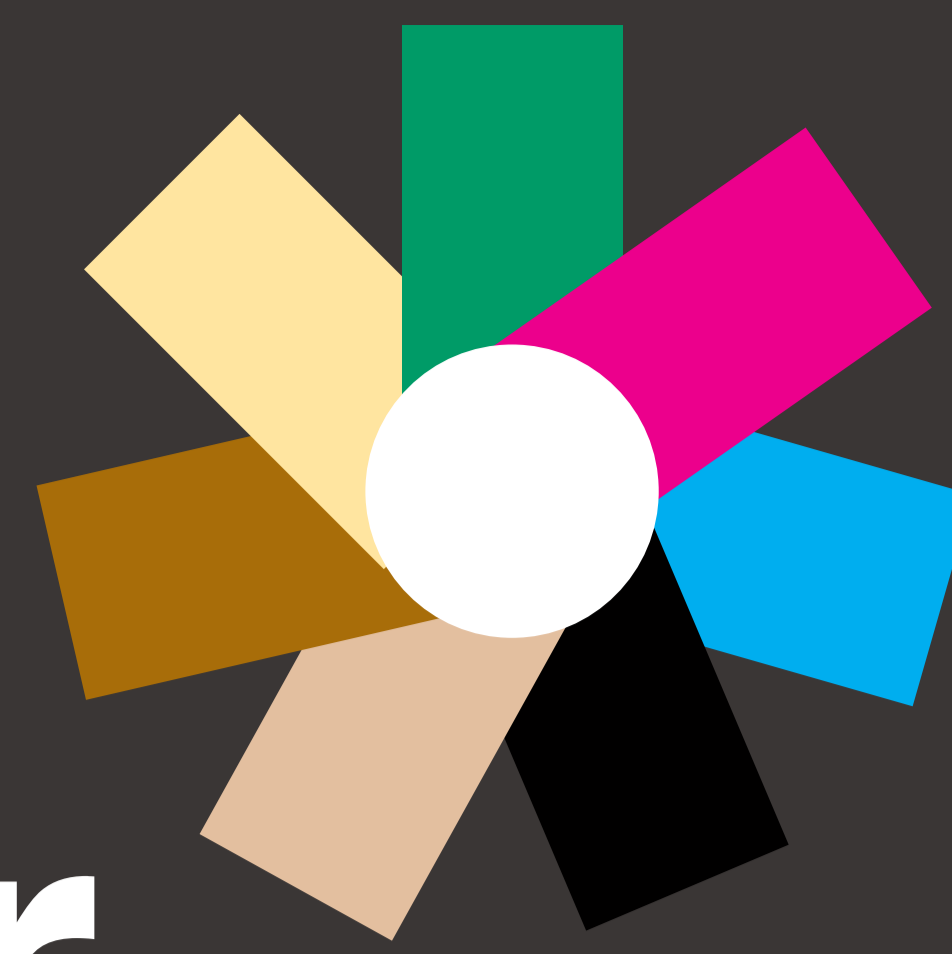
ARCHITECTURAL & DECORATIVE  
STAINLESS STEEL

[www.theinoxincolor.com](http://www.theinoxincolor.com)



**Proyecto:**  
Escada Headquarters  
München (Alemania)

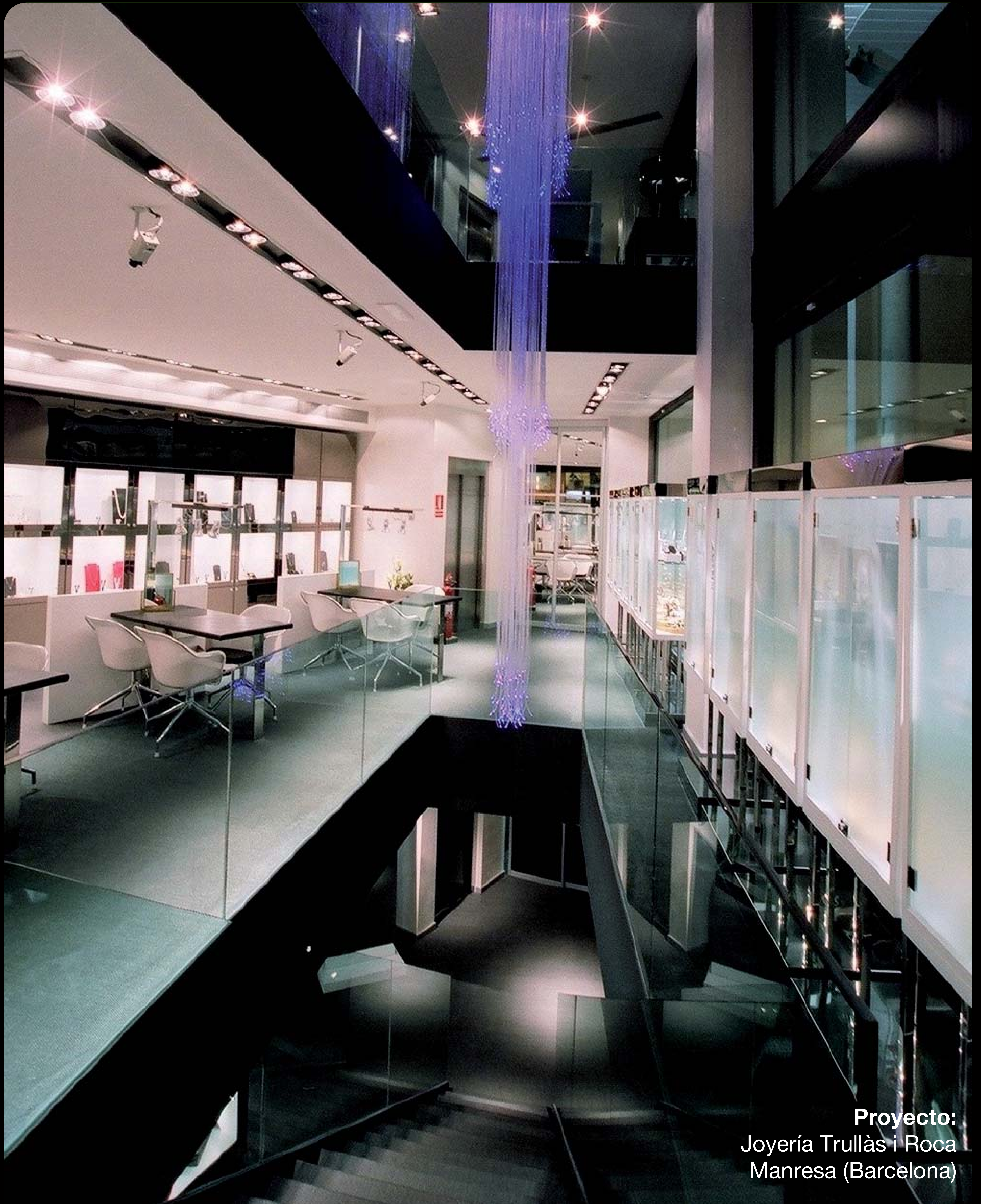
**Acero Inoxidable en Color**  
*Colored Stainless Steel*



# the inox in color

ARCHITECTURAL & DECORATIVE  
STAINLESS STEEL

[www.theinoxincolor.com](http://www.theinoxincolor.com)



**Proyecto:**  
Joyería Trullàs i Roca  
Manresa (Barcelona)

**Acero Inoxidable en Color**  
*Colored Stainless Steel*

# Colored Stainless Steel

THE INOX IN COLOR®

---

## INOX

### Material

---

Stainless Steel  
(AISI-304, 304L, 316, 316L...)

### Standard sizes

---

1219 x 2438 mm.  
1219 x 3048 mm.

### Thicknesses

---

0,5 to 2 mm.

### Maximal Length

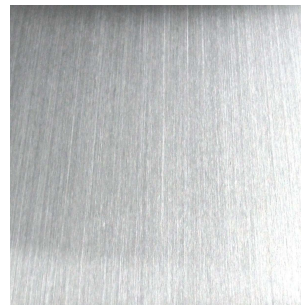
---

4000 mm.

## FINISHING



MIRROR



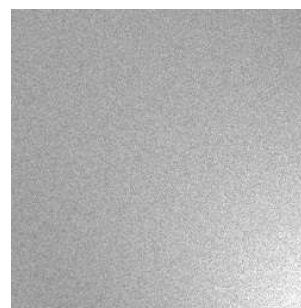
SATIN - HL



SATIN - N4



VIBRATION



BEAD BLASTED



ETCHED PATTERNS



**antifingerprints®** Surface treatment available on all finishings and colors except Mirror finished surface (for the time being).



# Colored Stainless Steel

THE INOX IN COLOR®

---

## BLACK

### Material

---

Stainless Steel  
(AISI-304, 304L, 316, 316L...)

### Standard sizes

---

1219 x 2438 mm.  
1219 x 3048 mm.

### Thicknesses

---

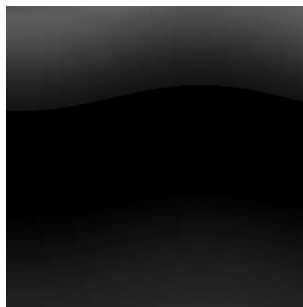
0,5 to 2 mm.

### Maximal Length

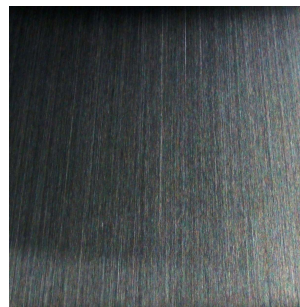
---

4000 mm.

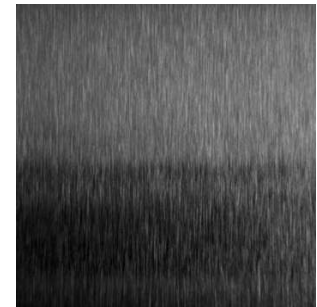
## FINISHING



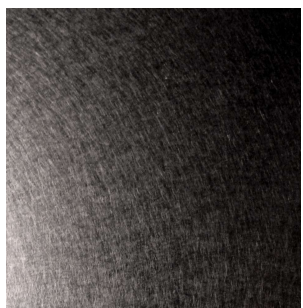
MIRROR



SATIN - HL



SATIN - N4



VIBRATION



BEAD BLASTED



ETCHED PATTERNS



antifingerprints® Surface treatment available on all finishings and colors except Mirror finished surface (for the time being).



# Colored Stainless Steel

THE INOX IN COLOR®

---

## BRASS

### Material

---

Stainless Steel  
(AISI-304, 304L, 316, 316L...)

### Standard sizes

---

1219 x 2438 mm.  
1219 x 3048 mm.

### Thicknesses

---

0,5 to 2 mm.

### Maximal Length

---

4000 mm.

## FINISHING



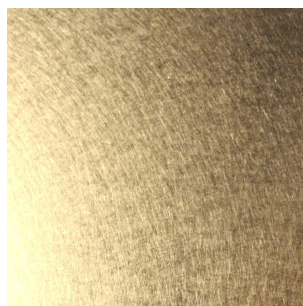
MIRROR



SATIN - HL



SATIN - N4



VIBRATION



BEAD BLASTED



ETCHED PATTERNS



**antifingerprints®** Surface treatment available on all finishings and colors except Mirror finished surface (for the time being).



# Colored Stainless Steel

THE INOX IN COLOR®

---

## GOLD

### Material

---

Stainless Steel  
(AISI-304, 304L, 316, 316L...)

### Standard sizes

---

1219 x 2438 mm.  
1219 x 3048 mm.

### Thicknesses

---

0,5 to 2 mm.

### Maximal Length

---

4000 mm.

## FINISHING



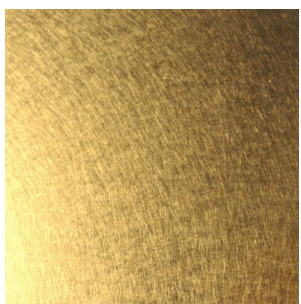
MIRROR



SATIN - HL



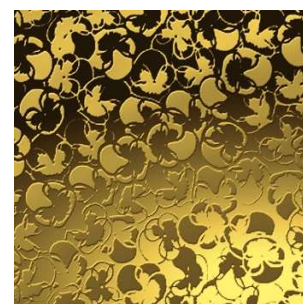
SATIN - N4



VIBRATION



BEAD BLASTED



ETCHED PATTERNS



antifingerprints® Surface treatment available on all finishings and colors except Mirror finished surface (for the time being).



# Colored Stainless Steel

THE INOX IN COLOR®

---

## COPPER

### Material

---

Stainless Steel  
(AISI-304, 304L, 316, 316L...)

### Standard sizes

---

1219 x 2438 mm.  
1219 x 3048 mm.

### Thicknesses

---

0,5 to 2 mm.

### Maximal Length

---

4000 mm.

### FINISHING



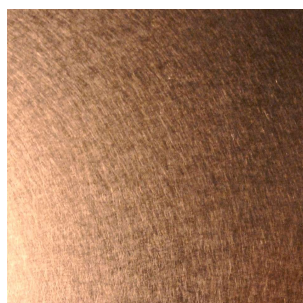
MIRROR



SATIN - HL



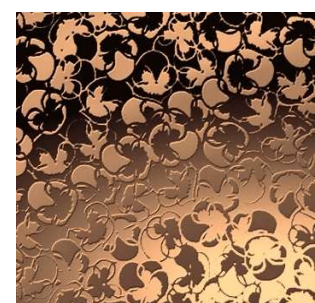
SATIN - N4



VIBRATION



BEAD BLASTED



ETCHED PATTERNS



**antifingerprints®** Surface treatment available on all finishings and colors except Mirror finished surface (for the time being).



# Colored Stainless Steel

THE INOX IN COLOR®

---

## BRONZE

### Material

---

Stainless Steel  
(AISI-304, 304L, 316, 316L...)

### Standard sizes

---

1219 x 2438 mm.  
1219 x 3048 mm.

### Thicknesses

---

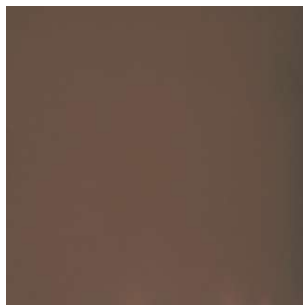
0,5 to 2 mm.

### Maximal Length

---

4000 mm.

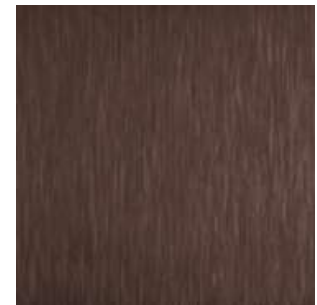
## FINISHING



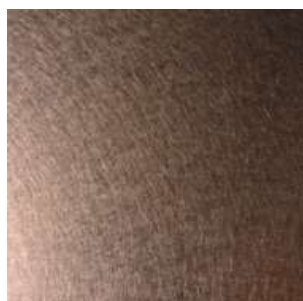
MIRROR



SATIN - HL



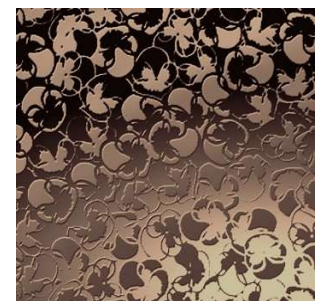
SATIN - N4



VIBRATION



BEAD BLASTED



ETCHED PATTERNS



antifingerprints® Surface treatment available on all finishings and colors except Mirror finished surface (for the time being).



# Colored Stainless Steel

THE INOX IN COLOR®

---

## BLUE

### Material

---

Stainless Steel  
(AISI-304, 304L, 316, 316L...)

### Standard sizes

---

1219 x 2438 mm.  
1219 x 3048 mm.

### Thicknesses

---

0,5 to 2 mm.

### Maximal Length

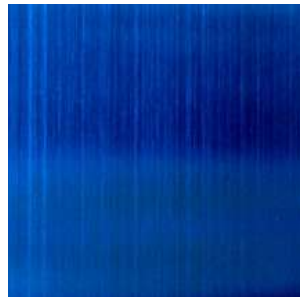
---

4000 mm.

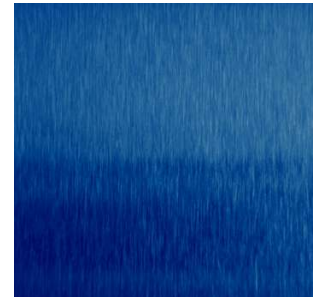
### FINISHING



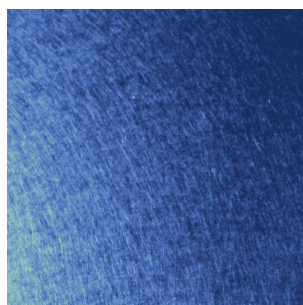
MIRROR



SATIN - HL



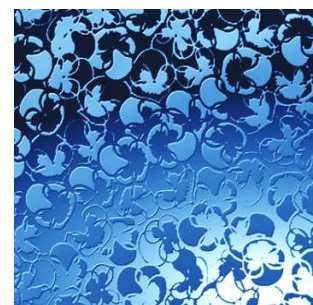
SATIN - N4



VIBRATION



BEAD BLASTED



ETCHED PATTERNS



**antifingerprints®** Surface treatment available on all finishings and colors except Mirror finished surface (for the time being).

